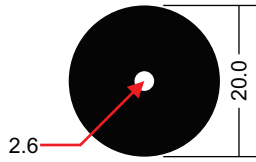


# AirStream Cable & Tube Seal Identification Chart

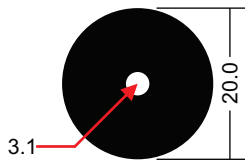
Place seal over drawing to find match.

**Note: If printing to use as template, choose "actual size" in print dialog box**

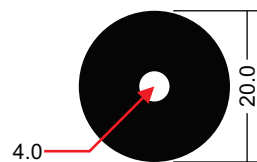
## Cable Seals



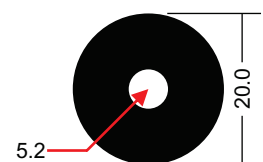
**89510**  
2.5-3.0 mm



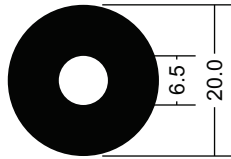
**89511**  
3.0-3.8 mm



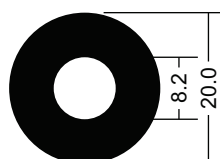
**89512**  
3.8-5.0 mm



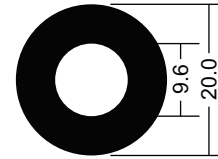
**89513**  
5.0-6.0 mm



**89514**  
6.4-8.0 mm

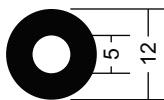


**89516**  
8.0-9.5 mm

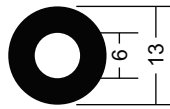


**89517**  
9.5-11 mm

## Tube Seals



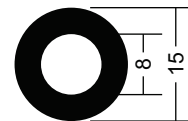
**89549**  
5 mm tube



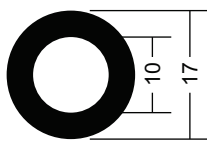
**89553**  
7 mm tube



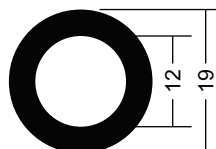
**89550**  
8-8.5 mm tube



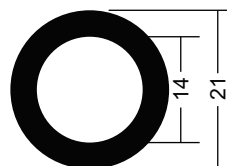
**89551**  
10 mm tube



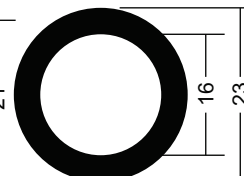
**89552**  
12-12.7 mm tube



**89555**  
14 mm tube



**89554**  
16 mm tube



**89558**  
18 mm tube

