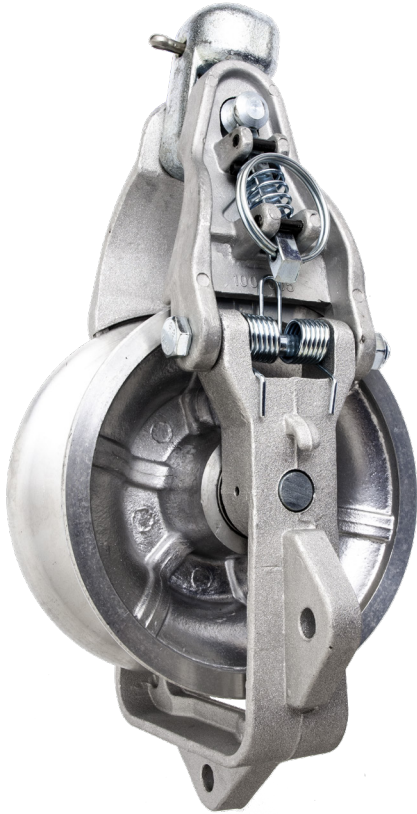




# UNIVERSAL STRINGING BLOCK

**NEW**

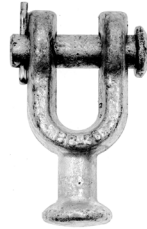
With Spring Loaded Pin Style Locking Latch



The UB1A Bethea Block has a spring-loaded latch that can be opened and closed with a hot stick.

Order P/N 74135

## Suspended Mounts (socket adapter)



Order P/N 74137  
Ball Clevis



Order P/N 74138  
Y-Clevis Ball



Order P/N 74139  
Ball Hook



Order P/N 74140  
Oval Eye Ball



Order P/N 74136  
Safety Ball Hook

Pick your mount and block from the pictures above and use the associated part numbers to order.

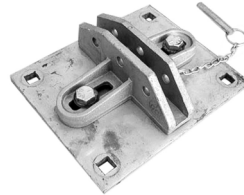
## Accessory Cross Arm Brackets



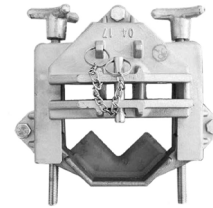
Order P/N 74147  
Adapter Fits - 5 3/8" x 6 1/4"  
Cross Arm



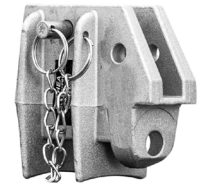
Order P/N 74148  
One Handed Installation -  
4 1/2" x 5 1/2" Cross Arm



Order P/N 74149  
Adapter Fits - 6 1/2" x 8"  
Cross Arm



Order P/N 74150  
Adapter with Handles for  
Tie Top Post Insulator



Order P/N 74151  
Adapter for Clamp  
Type Insulator

These rugged universal blocks feature high strength and low weight at a value price. With a working load limit of 2,500 lbs., they can be configured with 5 different mounting options. Permanently lubricated bearings provide long term durability and an extreme temperature operating range.

- 8.1 – 13.0-lbs depending on configuration
- 7" Block (O.D.)
- 3" Sheave (rim width)
- 3-1/8" Width (throat)
- Cast from A356 Aluminum and heat treated
- Working Load Limit of 2,500 lbs.
- Double shielded, deep groove ball bearings
- Permanently lubricated to withstand -5F to 250F
- Profile machined groove for concentricity
- 2" Max Diameter of the Conductor

## TOOLS BUILT TO GO THE DISTANCE

General Machine Products (KT), LLC · 3111 Old Lincoln Highway Trevose, PA 19053 USA

Tel: +1.215.357.5500 Fax: +1.215.357.6216 www.GMPtools.com GMP Universal Stringing Blocks\_74135.indd