

JAMB SKID

OPERATION & MAINTENANCE MANUAL



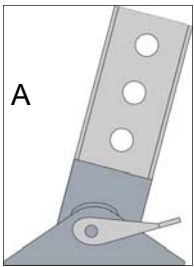
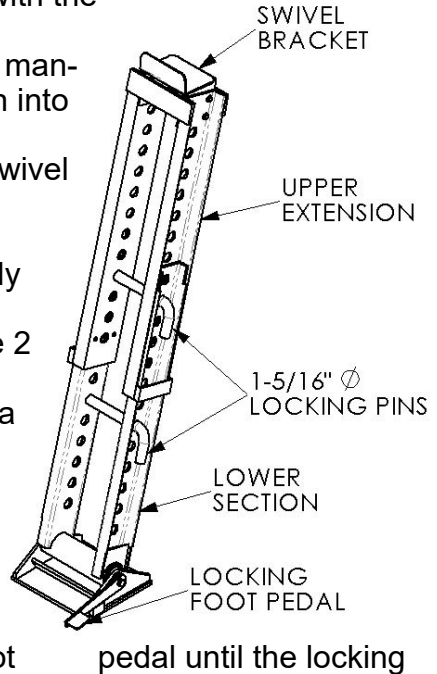
P/N	RANGE
70640	48" to 85"
70643	84" to 121"
70646	114" to 151"

Copyright 2012 by General Machine Products (KT), LLC

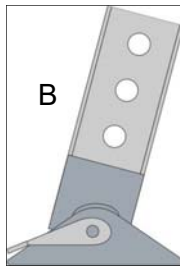
All rights reserved. No part of this publication may be copied, reproduced or transmitted in any form whatsoever without the written permission of General Machine Products (KT), LLC

INSTALLATION

1. Lower the lower section of the Jam Skid into the manhole. Rotate the locking foot pedal to the unlocked position (figure A).
2. Align the center of the jam skid with the center of the duct.
3. Lower the upper section into the manhole and install the upper section into the lower section.
4. Raise the upper section so the swivel bracket rests under the lip of the manhole and the entire jam skid rests at an angle of approximately 75° from the floor.
5. Install a locking pin to secure the 2 sections.
6. Using the 2nd locking pin install a sheave or quadrant of suitable size for the cable between the jam skid legs and align with the duct.
7. Secure the jam skid by moving the base in or out slightly while pressing down on the locking foot pedal until the locking foot pedal fully engages (B).



unlocked



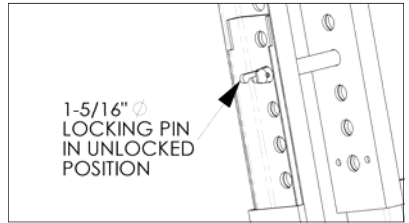
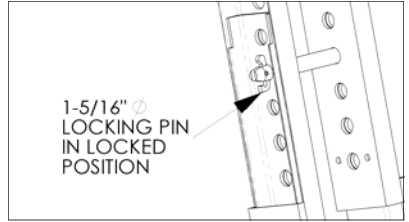
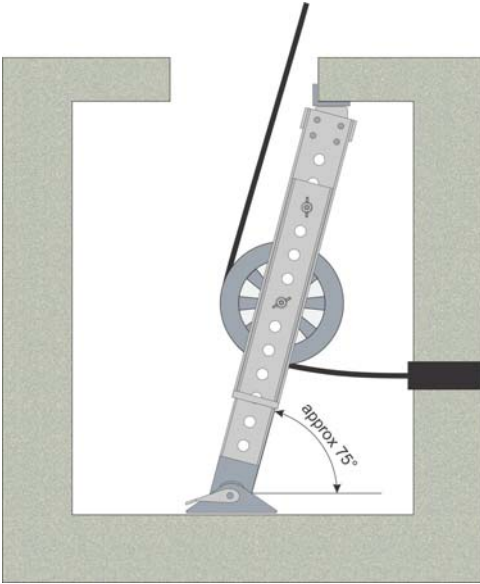
*fully engaged
and locked*

REMOVAL

1. Place leverage bar under locking foot pedal and pry up to release the Jamb Skid.
2. Remove the Jamb Skid by reversing the installation procedure.



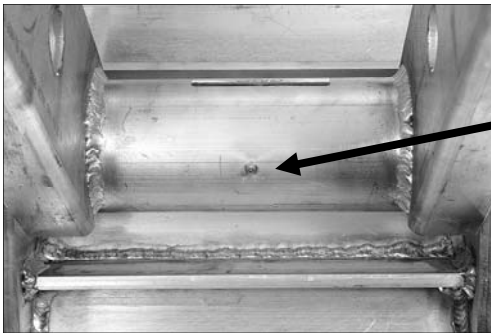
This equipment should be used only by personnel who have been given the appropriate training and who are competent to use it. These instructions are to be made available to operators of this equipment at all times. Failure to observe these safety instructions could result in serious personal injury and/or property damage.



70640 & 70643 rated @ 10,000 lbs.
70646 rated @ 5,000 lbs.

Maintenance

1. Before use, ensure that the Jam Skid is not damaged, bent or twisted and all bolts are tight
2. Locking pins should be wiped with a light oil to prevent rust.
3. Jam skid should be cleaned of all mud and contaminants before storage.
4. Locking foot should be periodically greased to ensure smooth operation.



Grease Fitting

OPTIONS



Quadrant Blocks

P/N	Max. Cable Size	Weight
84453	3 in. (76 mm)	60 lbs (27 kgs)
84454	4 in. (102 mm)	75 lbs (34 kgs)
84455	5 in. (127 mm)	90 lbs (40 kgs)

Cable Sheaves

P/N	WIDTH	DIAMETER	ROOT	Weight
71723	3 in. (8 cm)	11 in.(28 cm)	8-1/2 in.(22 cm)	15 lbs.(7 kgs)
71726	4 in.(10 cm)	11 in.(28 cm)	7-7/8 in.(20 cm)	20 lbs.(9 kgs)
71729	5 in.(13 cm)	11 in.(28 cm)	6-7/8 in.(17 cm)	25 lbs.(11 kgs)
71722	3 in.(8 cm)	20 in.(51 cm)	17-1/2 in.(44 cm)	32 lbs.(15 kgs)
71725	4 in.(10 cm)	20 in.(51 cm)	16 in.(41 cm)	36 lbs.(16 kgs)
71728	5 in.(13 cm)	20 in.(51 cm)	16-1/2 in.(42 cm)	40 lbs.(18 kgs)
71721	3 in.(8 cm)	26-1/2 in.(67 cm)	24 in.(61 cm)	38 lbs.(17 kgs)
71724	4 in.(10 cm)	26-1/2 in.(67 cm)	22-1/2 in.(57 cm)	44 lbs.(19 kgs)
71727	5 in.(13 cm)	26-1/2 in.(67 cm)	23 in.(58 cm)	56 lbs.(25 kgs)

Extensions – Note: only one extension can be used at a time. Do not stack

P/N	Description
31356	Optional extension that allows the user to convert the height of the 70643 or 70646 to 48 in. to 85 in. (121.9 to 215.9 cm). Rated at 10,000 lbs. cable tension.
31357	Optional extension that allows the user to convert the height of the 70640 or 70646 to 84 to 121 in. (213.4 to 307.3 cm). Rated at 10,000 lbs. cable tension.
31358	Optional extension that allows the user to convert the height of the 70640 or 70643 to 114 to 151 in. (289.6 to 383.5 cm). Rated at 5,000 lbs. cable tension.