

Instruction Sheet AEM 1000-21  
**MODEL UG WINCH**  
**DOUBLE PLATE SAFETY BRAKE**  
LH or RH worm, sprocket to rear

**INSTRUCTIONS FOR BRAKE ASSEMBLY  
OVER WIND DRUM ROTATION**

Insert a new oil seal (54) in the housing.

Turn the worm in its bearings until the lug on the stop sleeve (32) is on top and hold it in this position until the brake nut (7 or 8) has been threaded all the way onto the worm brake stud (48 or 49).

Rotate the drum with manual force to position the worm at its most forward location in the housing toward the front of the vehicle. Turn the worm brake nut (7 or 8) away from the winch until the distance between the outer face of the nut and the reference surface on the bearing cage (51) measures approximately 3-1/32 inches.

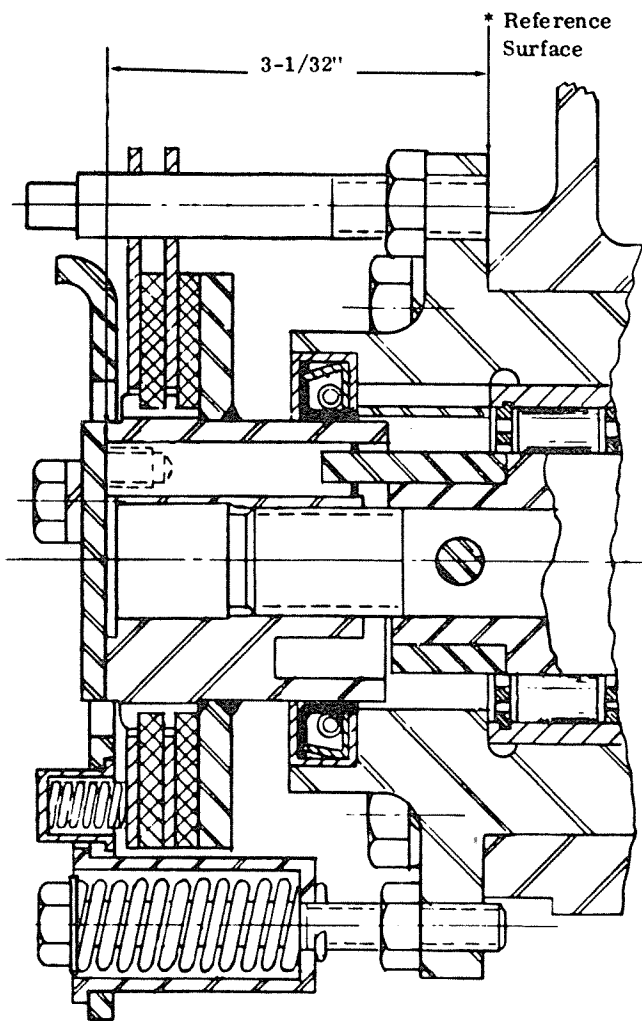
Place the stop pin (4) in the brake nut (7 or 8) using the nearest open hole to the left hand side of the lug for right hand worm or the nearest hole on the right hand side of the lug for left hand worm. The worm and the worm brake stud must be of the same hand.

Insert brake lining (6) over splined brake nut (7 or 8) against flange of the nut. Place a brake plate (5) on brake anchor studs (3) against face of brake lining (6). Install second brake lining (6) and brake plate (5) in a similar manner.

Place gasket (2) on face of brake nut (7 or 8). Use gasket sealer if available. Fasten with stop pin retaining washer (1) and two hex head screws (74) and lock washers (85).

Make up four thimble assemblies (90) using parts (25, 80, 27, 29, 77 and 69). Install two thimbles (23) and spring (24) into pressure plate (26). Assemble this assembly against brake plate (5) and attach with four thimble assemblies (90) through pressure plate and onto bearing cage (51).

Adjust the worm brake under load: Place a strain of about 1,000 pounds on the winch line. While holding this load, adjust the spring pin assemblies (90) by screwing them into or out of the housing until a uniform 1/32 inch clearance is achieved between the outer brake plate (5) and pressure plate (26).



**Refer to AEP1000-21 for identification of parts**